



SEM TRAINERS & SYSTEMS

WHERE TIME MOVES AHEAD TO KEEP PACE WITH KNOWLEDGE

SEM- Scientific Educative Methods in Science, Engineering & Medicine

Mobile : +91 88495 63724
Mobile 1: +91 98791 03905

Email: sem@semtrainers.com
Website: www.semtrainers.com

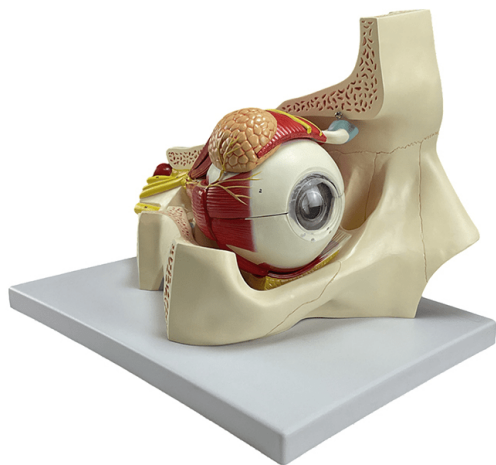
Eye Model, 5X Enlarged, 11-Parts

Item No. MG29939
Weight 4.4 lbs
Make: Nasco Healthcare, USA

[Read More](#)

SKU:

Categories: Eye Models



Product Description

Model is five times life-size and shows the eyeball with optic nerves and muscles in their natural position in the bony orbit. The eyeball is dissected into two removable halves with internal structures fully exposed. Removable parts: Cornea, Iris, Crystalline and Vitreous body - 4 parts; 3 different rectus bulb muscles; Levator muscle upper eyelid together with the lacrimal gland; Eyeball with extraocular muscles - 2 parts; Base of the bony orbit. Made with long-lasting synthetic material. Mounted on durable polymer base with bracket. Accompanying an interactive 3D anatomical model with augmented reality is a great tool to encourage learning and support. This platform allows students to engage in comparative analysis of anatomical models as they compare and contrast the structure of individual organs. This initiative also provides a platform for continuing education, providing opportunities for all students to increase their knowledge of anatomy, physiology and pathophysiology. One-Year Warranty
Ship Weight (LBs): 4.4 lbs. Dimensions. (Inches): 17.32 x 12.99 x 20.08