



SEM

SEM TRAINERS & SYSTEMS

WHERE TIME MOVES AHEAD TO KEEP PACE WITH KNOWLEDGE

SEM- Scientific Educative Methods in Science, Engineering & Medicine

Mobile : +91 88495 63724

Mobile 1: +91 98791 03905

Email: sem@semtrainers.com

Website: www.semtrainers.com



Tongue Model, 2.5X Enlarged, 3 Parts

Item No. MG29179

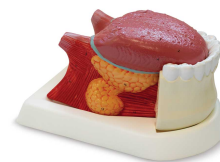
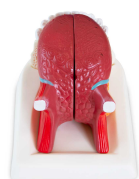
Weight 5.5 lbs

Make: Nasco Healthcare, USA

[Read More](#)

SKU:

Categories:Microanatomy Models



Product Description

Shows the lower jaw up to the 2nd premolar, the tongue, middle musculature and the right sublingual and submandibular glands. On removable base. Accompanying an interactive 3D anatomical model with augmented reality is a great tool to encourage learning and support. This platform allows students to engage in comparative analysis of anatomical models as they compare and contrast the structure of individual organs. This initiative also provides a platform for continuing education, providing opportunities for all students to increase their knowledge of anatomy, physiology and pathophysiology. Accompanying an interactive 3D anatomical model with augmented reality is a great tool to encourage

learning and support. This platform allows students to engage in comparative analysis of anatomical models as they compare and contrast the structure of individual organs. This initiative also provides a platform for continuing education, providing opportunities for all students to increase their knowledge of anatomy, physiology and pathophysiology. One-Year Warranty Ship Weight (LBs): 5.5 lbs. Dimensions. (Inches): 12.99 x 12.99 x 11.02