



SEM

SEM TRAINERS & SYSTEMS

WHERE TIME MOVES AHEAD TO KEEP PACE WITH KNOWLEDGE

SEM- Scientific Educative Methods in Science, Engineering & Medicine

Mobile : +91 88495 63724

Mobile 1: +91 98791 03905

Email: sem@semtrainers.com

Website: www.semtrainers.com



Auditory Bones, Tympanic Membrane, & Coclea Model, 3 Parts

Item No. MG38391

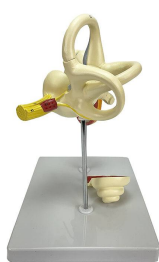
Weight 3.3 lbs

Make: Nasco Healthcare, USA

[Read More](#)

SKU:

Categories: Ear Models



Product Description

Composed of three parts: inner ear, tympanic membrane, auditory ossicles, cochlea and vestibulocochlear nerve. Comes with an interactive 3D anatomical model with augmented reality, it is a great tool to encourage learning and support. This platform allows students to engage in comparative analysis of anatomical models as they compare and contrast the structure of individual organs. This initiative also provides a platform for continuing education, providing opportunities for all students to

increase their knowledge of anatomy, physiology and pathophysiology. One-Year Warranty Ship
Weight (LBs): 3.3 lbs. Dimensions. (Inches): 9.84 x 8.66 x 13.78