



SEM

SEM TRAINERS & SYSTEMS

WHERE TIME MOVES AHEAD TO KEEP PACE WITH KNOWLEDGE

SEM- Scientific Educative Methods in Science, Engineering & Medicine

Mobile : +91 88495 63724
Mobile 1: +91 98791 03905

Email: sem@semtrainers.com
Website: www.semtrainers.com

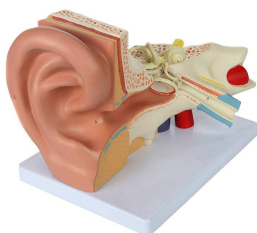
Ear Model, 3X Enlarged, 5-Parts

Item No. MG29982
Weight 5.5 lbs
Make: Nasco Healthcare, USA

[Read More](#)

SKU:

Categories: Ear Models



Product Description

Model three times life size that shows the outer, middle and inner ear. The tympanum with malleus, anvil and stirrup are removable. Other removable parts: cochlea and labyrinth with vestibular and cochlear nerves, 2 sections of bone that define the middle and inner ear. Accompanying an interactive 3D anatomical model with augmented reality is a great tool to encourage learning and support. This platform allows students to engage in comparative analysis of anatomical models as they compare and

contrast the structure of individual organs. This initiative also provides a platform for continuing education, providing opportunities for all students to increase their knowledge of anatomy, physiology and pathophysiology. One-Year Warranty Ship Weight (LBs): 5.5 lbs. Dimensions. (Inches): 16.14 x 10.63 x 8.66