



SEM TRAINERS & SYSTEMS

WHERE TIME MOVES AHEAD TO KEEP PACE WITH KNOWLEDGE

SEM- Scientific Educative Methods in Science, Engineering & Medicine

Mobile : +91 88495 63724
Mobile 1: +91 98791 03905

Email: sem@semtrainers.com
Website: www.semtrainers.com



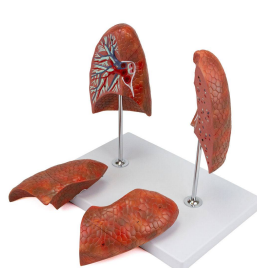
Lung Model, 4 Parts

Item No. MG29786
Weight 5.5 lbs
Make: Nasco Healthcare, USA

[Read More](#)

SKU:

Categories:Lung Models



Product Description

Life Size Lung Model four Parts, is a life size model shows the lung structure, hilar structure, in a front section of the lung in 4 parts. Shows the following structures: Both left and right lungs; Lung lobes (three on the right, two on the left); Bronchial tree; Pulmonary arteries and pulmonary veins; Pulmonary hilum; Lymph nodes; Impressions of the azygos vein, aorta and aortic arch; Product Details: Left and right lungs mounted on base; Can be dismantled into four parts; This lung model is mounted on bases; Accompanying an interactive 3D anatomical model with augmented reality is a great tool to encourage learning and support. This platform allows students to engage in comparative analysis of anatomical models as they compare and contrast the structure of individual organs. This initiative also provides a platform for continuing education, providing opportunities for all students to increase their knowledge of

anatomy, physiology and pathophysiology. One-Year Warranty Ship Weight (LBs): 5.5 lbs. Dimensions.
(Inches): 17.32 x 12.99 x 8.66