



SEM

SEM TRAINERS & SYSTEMS

WHERE TIME MOVES AHEAD TO KEEP PACE WITH KNOWLEDGE

SEM- Scientific Educative Methods in Science, Engineering & Medicine

Mobile : +91 88495 63724

Mobile 1: +91 98791 03905

Email: sem@semtrainers.com

Website: www.semtrainers.com



Bronchial Tree Section with Pathology Model, 10X Enlarged

Item No. MG31098

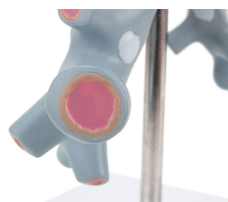
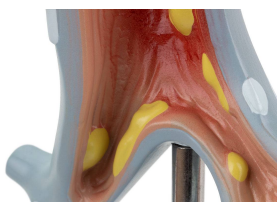
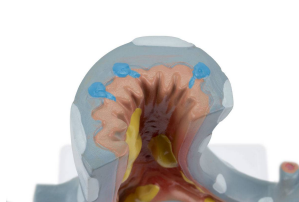
Weight 2.2 lbs

Make: Nasco Healthcare, USA

[Read More](#)

SKU:

Categories:Lung Models



Product Description

A model ten times life size, which demonstrates two pathologies of the bronchi (bronchitis and bronchiectasis), one refers to inflammation and the other to chronic abnormal dilation of one or more bronchi. Made with long-lasting synthetic material. Accompanying an interactive 3D anatomical model with augmented reality is a great tool to encourage learning and support. This platform allows students to engage in comparative analysis of anatomical models as they compare and contrast the structure of individual organs. This initiative also provides a platform for continuing education, providing opportunities for all students to increase their knowledge of anatomy, physiology and pathophysiology.

One-Year Warranty Ship Weight (LBs): 2.2 lbs. Dimensions. (Inches): 5.12 x 5.12 x 13.78