



SEM

SEM TRAINERS & SYSTEMS

WHERE TIME MOVES AHEAD TO KEEP PACE WITH KNOWLEDGE

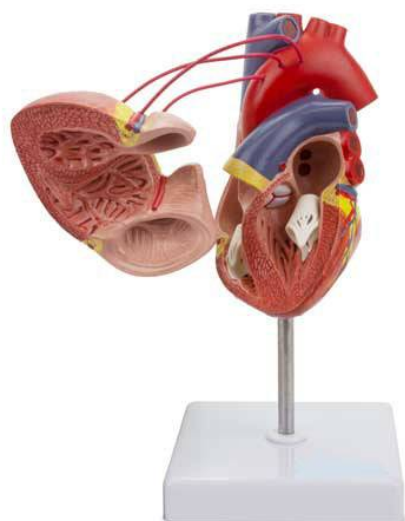
SEM- Scientific Educative Methods in Science, Engineering & Medicine

Mobile : +91 88495 63724

Mobile 1: +91 98791 03905

Email: sem@semtrainers.com

Website: www.semtrainers.com



Classic Heart Model with Coronary Bypass

Item No. MG22275

Weight 2.2 lbs

Make: Nasco Healthcare, USA

[Read More](#)

SKU:

Categories: Human Heart Models

Product Description

A full-size two-part model that provides an extremely detailed sample of the anatomy of the human heart with three coronary bypasses. The anterior wall can be removed to expose the chamber and interior valves. Made with long-lasting synthetic material. Accompanying an interactive 3D anatomical model with augmented reality is a great tool to encourage learning and support. This platform allows students to engage in comparative analysis of anatomical models as they compare and contrast the structure of individual organs. This initiative also provides a platform for continuing education providing opportunities for all students to increase their knowledge of anatomy physiology and pathophysiology. One-Year Warranty Ship Weight (LBs): 2.2 lbs. Dimensions. (Inches): 4.72 x 4.72 x 7.87