



**SEM**

## SEM TRAINERS & SYSTEMS

WHERE TIME MOVES AHEAD TO KEEP PACE WITH KNOWLEDGE

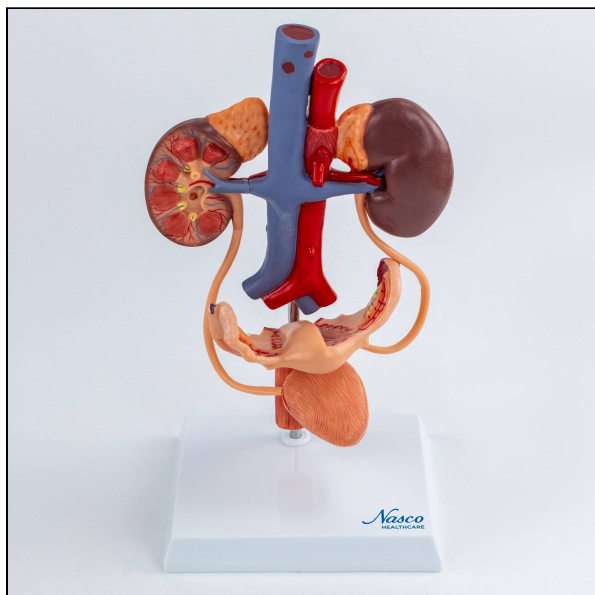
SEM- Scientific Educative Methods in Science, Engineering & Medicine

**Mobile :** +91 88495 63724

**Mobile 1:** +91 98791 03905

**Email:** sem@semtrainers.com

**Website:** www.semtrainers.com



## Female Urinary System Model

Item No. MG40888

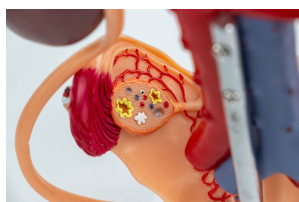
Weight 3.3 lbs

Make: Nasco Healthcare, USA

[Read More](#)

**SKU:**

**Categories:**Urology Models



### Product Description

This model presents a comprehensive approach to the characteristics of the female urinary system, covering the internal structures. It highlights crucial organs including the kidneys, urinary bladder and urethra. The urinary system plays an essential role in eliminating waste and regulating fluid balance in a woman's body, contributing to overall health and well-being. Accompanying an interactive 3D anatomical model with augmented reality is a great tool to encourage learning and support. This platform allows students to engage in comparative analysis of anatomical models as they compare and contrast the structure of individual organs. This initiative also provides a platform for continuing education, providing opportunities for all students to increase their knowledge of anatomy, physiology

and pathophysiology. One-Year Warranty Ship Weight (LBs): 3.3 lbs. Dimensions. (Inches): 9.84 x 8.66 x 15.75