



SEM

SEM TRAINERS & SYSTEMS

WHERE TIME MOVES AHEAD TO KEEP PACE WITH KNOWLEDGE

SEM- Scientific Educative Methods in Science, Engineering & Medicine

Mobile : +91 88495 63724

Mobile 1: +91 98791 03905

Email: sem@semtrainers.com

Website: www.semtrainers.com



Kidney with Adrenal Gland Model, 1.5X Enlarged, 2 Parts

Item No. MG31016

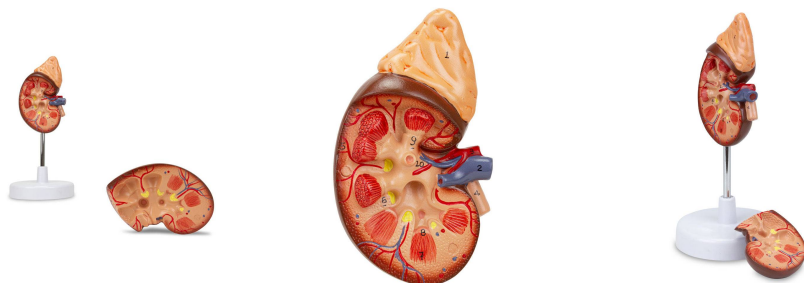
Weight 2.2 lbs

Make: Nasco Healthcare, USA

[Read More](#)

SKU:

Categories: Digestive System Models



Product Description

Model in 2 parts, 1.5 times life size, showing the human kidney in the frontal region. Internal structures are clearly revealed, including the cortex, medulla, pyramids, calyces, renal pelvis (partially open), ureter, origins of the renal artery and vein. The front of the model is removable for closer internal examination. Important anatomical structures are numbered and indicated in different colors for easy understanding. Accompanying an interactive 3D anatomical model with augmented reality is a great

tool to encourage learning and support. This platform allows students to engage in comparative analysis of anatomical models as they compare and contrast the structure of individual organs. This initiative also provides a platform for continuing education, providing opportunities for all students to increase their knowledge of anatomy, physiology and pathophysiology. One-Year Warranty Ship Weight (LBs): 2.2 lbs. Dimensions. (Inches): 8.27 x 6.3 x 11.81