



SEM

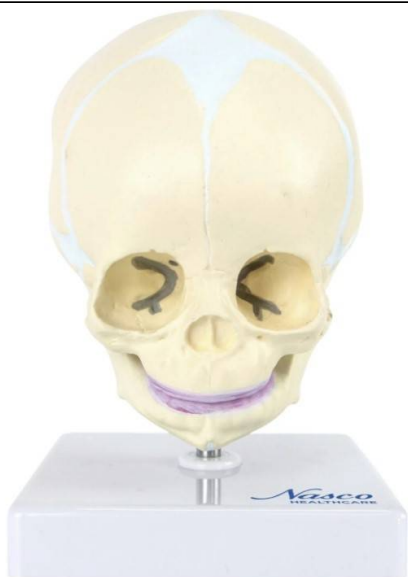
SEM TRAINERS & SYSTEMS

WHERE TIME MOVES AHEAD TO KEEP PACE WITH KNOWLEDGE

SEM- Scientific Educative Methods in Science, Engineering & Medicine

Mobile : +91 88495 63724
Mobile 1: +91 98791 03905

Email: sem@semtrainers.com
Website: www.semtrainers.com



Fetal Skull Model Mounted on Stand, 30th Week

Item No. MG22302
Weight 2.2 lbs.
Make: Nasco Healthcare, USA

[Read More](#)

SKU:

Categories: Human Skull Models



Product Description

This incredible reproduction of a fetal skull in its 30th week of gestation is unique in the world. Its

realism and high manufacturing quality make it very difficult to distinguish between this model and a real skull. This model gives a complete overview of how the fetal skull develops inside the uterus. Accompanying an interactive 3D anatomical model with augmented reality is a great tool to encourage learning and support. This platform allows students to engage in comparative analysis of anatomical models as they compare and contrast the structure of individual organs. This initiative also provides a platform for continuing education, providing opportunities for all students to increase their knowledge of anatomy, physiology and pathophysiology. One-Year Warranty Ship Weight (LBs): 2.2 lbs. Dimensions. (Inches): 4.72 x 4.72 x 7.87